



HDMI over IP Extender

User Manual

Model : HE03

HDMI CAT5e Extender with HDMI Loop Out 150M



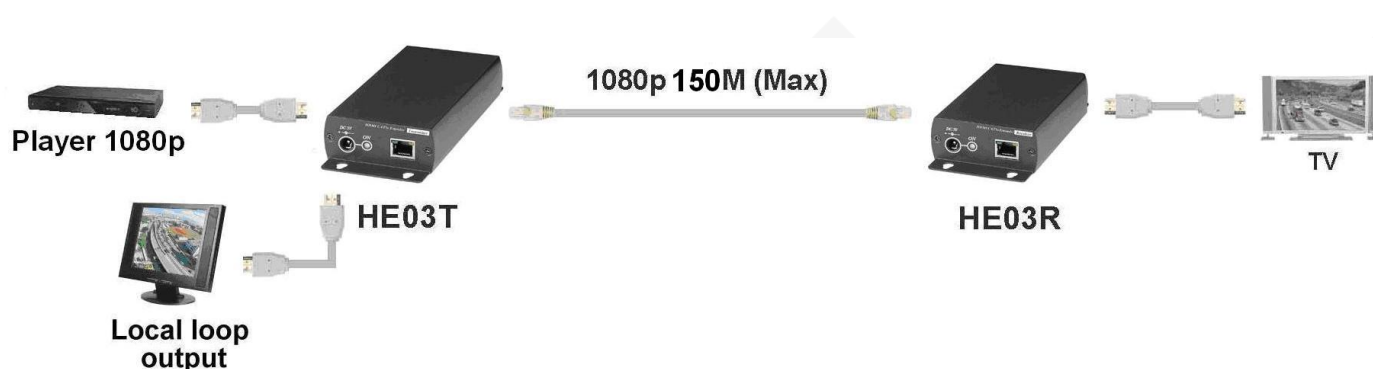
Introduction

HE03 is an HDMI extender that can use a cost-effective Ethernet cable to send HDMI signal for up to 150M with resolution up to 1080p@60Hz. Its TX unit has a loop out port that can connect an extra HDMI display. The extender applies AV over IP technology, which can work with Ethernet switches to split an HDMI signal into multiple ones.

Features

- Resolution up to 1080p@60Hz.
- Signal extension up to 150M over CAT5e (or greater) cable.
- Built-in local loop-out port for an extra HDMI display at TX side.
- Workable with Ethernet switches for point to many HDMI transmission.
- Workable with SR01X (IP repeater) for longer distance.

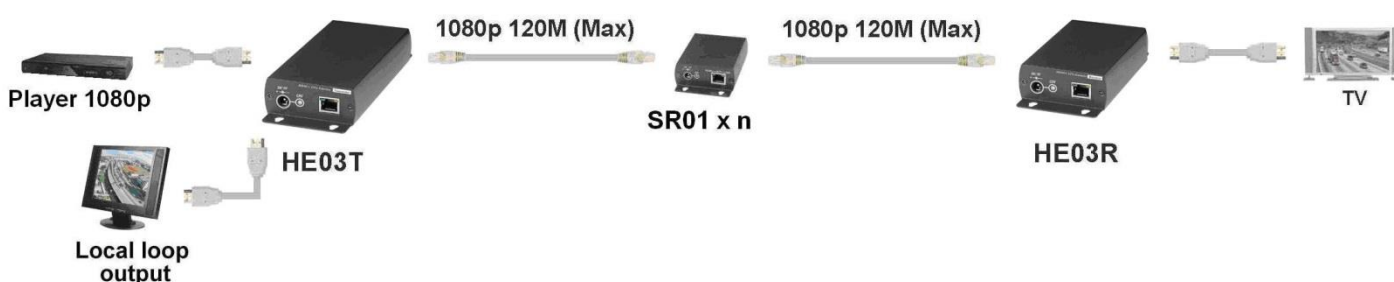
Installation view



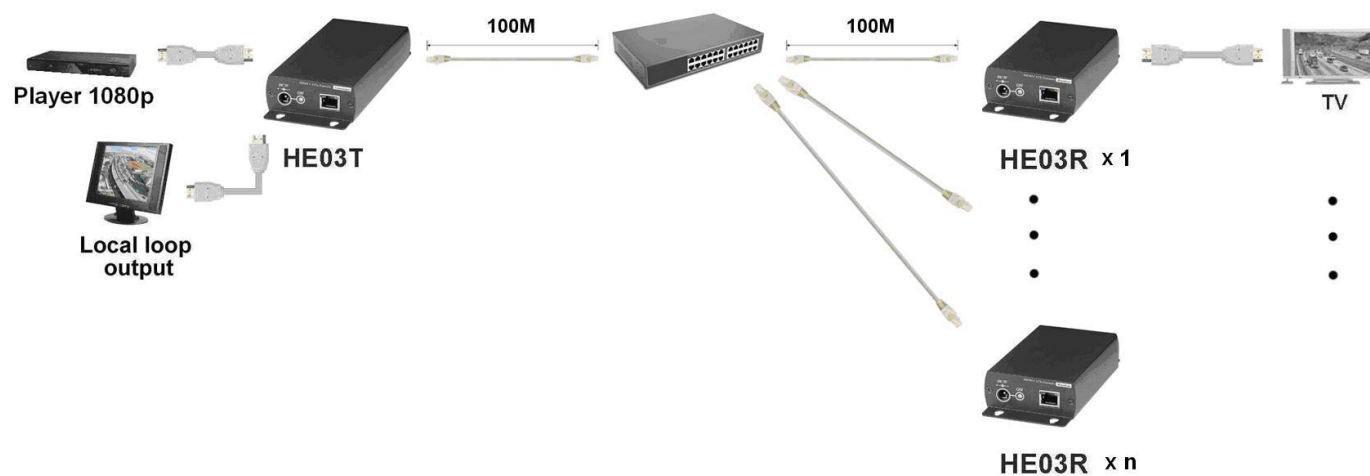
Optional Model: SR01 Signal Repeater (order separately)

- Extend data signal for an additional 120meters.
- Application for HE03T signals for extra-long range transmission.
- Ability to cascade connection with multiple SR01 for long range transmission
- Built in LED status indication.
- External power required.
- Plug and play for easy installation.

Work with HE03 CAT5e Extender

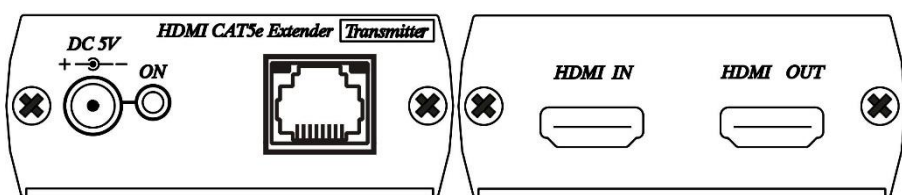


Economic HDMI over IP Extender, support point to many connections via network switch

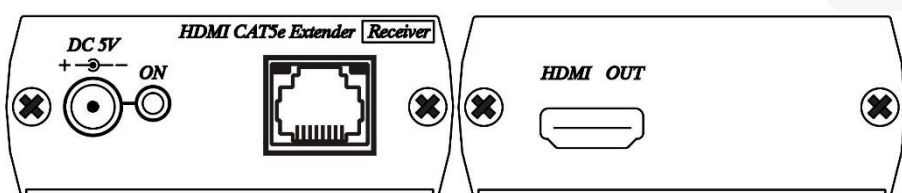


Panel View

1. Transmitter



2. Receiver



LED Indication Status

Green LED:	ON	Power on
RJ45 LED:	Orange Flash	(Data transmission)
	Green on	(linking)

Cable

Link Cable use high quality Cat.5e UTP/STP/FTP or Cat.6 UTP cable

RJ45 Define

Link Cable (TIA/EIA-568-B)

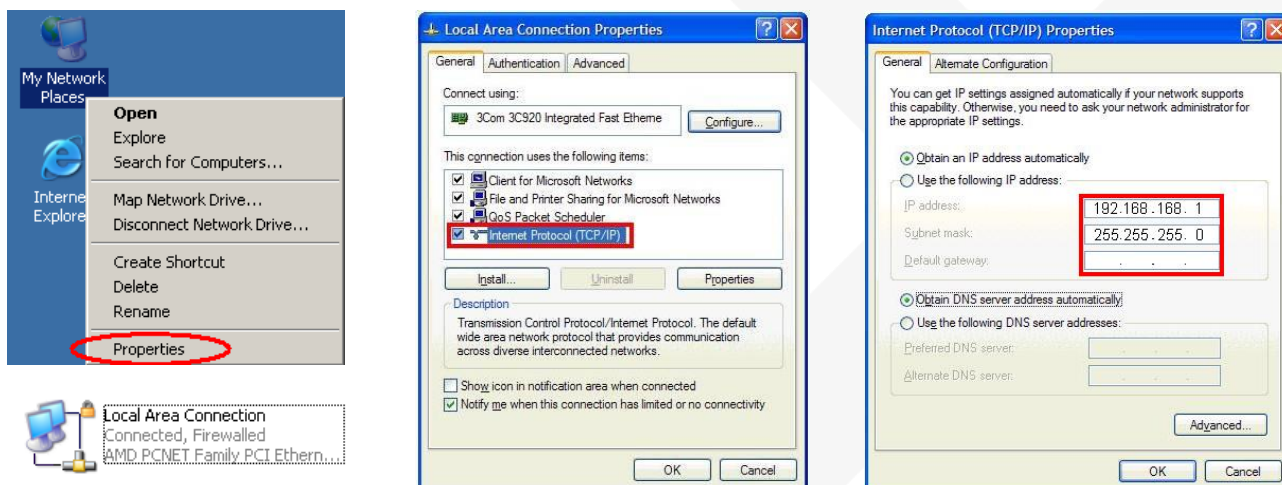
1. Orange-white	Data 1 +
2. Orange	Data 1 -
3. Green-white	Data 2 +
4. Blue	Data 3 +
5. Blue-white	Data 3 -
6. Green	Data 2 -
7. Brown-white	Data 4 +
8. Brown	Data 4 -

Computer IP Address Setting

System default IP address is 192.168.168.55 for HE03T, 192.168.168.56 for HE03R (subnet mask 255.255.255.0), Your computer must set in same subnet mask to enter the web setup page.

To change the IP address of computer please follow below step: (based on Windows XP):

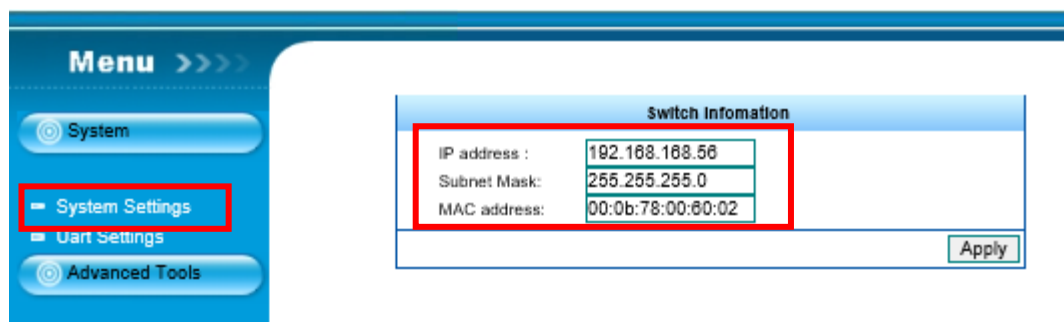
Right click on “My Network Place” → “Properties” then right click on “Local Area Connection” → “Properties” then double click on “Internet Protocol (TCP/IP)” to setting as below: (IP address 192.168.168.1, sub mask 255.255.255.0)



Login in to the web

Use CAT5e cable to connect transmitter/receiver RJ45 port to PC LAN port, enter the IP address of TX/RX in the web browser.

After login to the web, click System Settings you can change IP address, Subnet Mask, MAC address at System page, then click Apply to finish setting.



Specification

ITEM NO.	HE03T	HE03R
Support		
Compliance	HDMI 1.3b, HDCP	
Max. Video Resolution	1080p@60Hz	
Max. Transmission Distance	150M over CAT5e, 160M over CAT6 cable	
Ports & Interfaces		
Video Input	1 x HDMI Type A	1 x RJ45
Video Output	1 x RJ45	1 x HDMI Type A
Video Loop-out	1 x HDMI Type A	
Power		
Power Supply	DC 5V 2A	DC 5V 2A
Power Consumption	1200mA	700mA
Ambient Temperature		
Operation	-20 to 60°C	
Storage	-20 to 85°C	
Humidity	up to 95%	
Physical Characteristics		
Dimensions	67 x 170 x 27mm	67 x 130 x 27mm
Weight	250g	195g